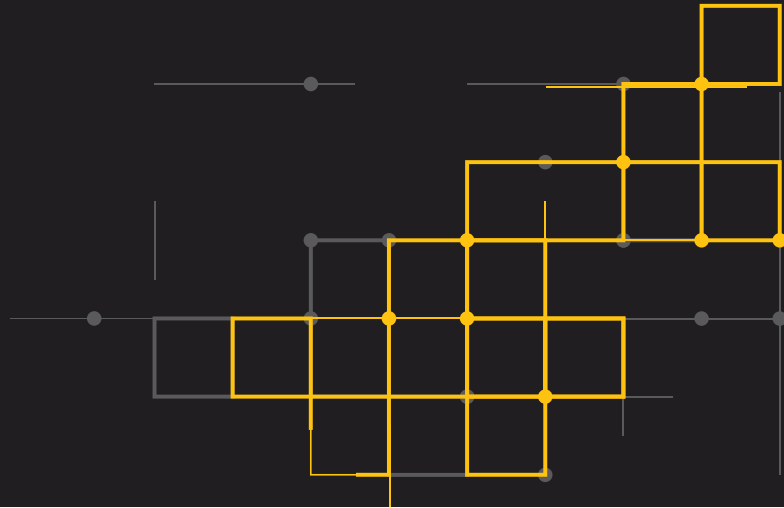


Blue Coat ProxySG S200/S400/S500

Advanced Web Security
for Today's Global Enterprises



At A Glance

Problem:

Protect users from threats, whether they are on the network, on the web, or in the cloud

Solution:

ProxySG S200/S400/S500

Benefits:

- Negative day threat defense
- Multi-authentication realm support
- Visibility into encrypted traffic
- Integration with advanced threat protections
- Control over web and cloud usage
- Accelerated cloud app performance

To keep pace with today's competitive landscape, you can't afford anything that slows you down. You need to protect your users from costly cyber threats, whether they are on the network, on the web or in the cloud, while ensuring the optimal performance of your business critical applications. The Blue Coat ProxySG S200, S400 and S500 deliver the comprehensive protection and performance you need to drive your business forward. As the world's most trusted Secure Web Gateway, used by over 70% of the Fortune 500, the ProxySG is a foundational element of any enterprise's security architecture.

Highest Level of Web Security Possible

The ProxySG consolidates a broad feature-set that protects your enterprise from the ever-increasing sophistication and volume of threats in your web traffic. Sitting between users and their interactions with the Internet, the ProxySG inspects content to identify malicious payloads and then filter, strip, block or replace web content to mitigate risks and prevent data loss (DLP). The ProxySG offers:

Negative Day Threat Defense

- The ProxySG provides on-demand cloud intelligence and real-time web content ratings to ensure your enterprise is protected from the latest threats. Blue Coat's cloud-based Global Intelligence Network feeds valuable, up-to-date information on the latest risks to the analytics engines to accelerate responses to web-based threats. A billion new web requests a day, from more than 15,000 enterprise customers and millions of end-users, are collected and analyzed to keep the ProxySG current; as a result, Blue Coat typically blocks over four million previously unseen or uncategorized threats per day. New defenses can also be seamlessly added to the Global Intelligence Network to scale the depth of protection, as needed

Strong User Authentication

- ProxySG has the broadest support for authentication vendors in the industry, providing the ability to easily integrate new users and groups – even those using completely different authentication technologies. The ProxySG supports multiple realms, and allows policies to query multiple realms sequentially as necessary to find a user, or default to a guest authentication scheme when a user cannot be found.

Visibility into Encrypted Traffic

- The ProxySG has an SSL Proxy that allows for visibility into SSL traffic, so the ProxySG can securely send attachments and content for inspection services. Encrypted Tap, a licensable feature, builds on the SSL Proxy capabilities to send a stream of decrypted content to third-party systems for additional analysis, archiving, and forensics. Together, they eliminate SSL blind spots, giving you complete visibility and control over SSL-encrypted traffic to stop rogue applications, malware and cyberattacks from using SSL to hide their activities.

Integration with the Latest Advanced Threat Protections Across the Industry

- ProxySG works seamlessly with best-of-breed technologies, including anti-malware, anti-virus (AV), blacklist and whitelist engines from a variety of vendors, as well as the static code analysis and sandbox brokering found in Symantec Content Analysis. The ProxySG can securely enable data loss prevention with certified DLP partners, via S-ICAP or standard ICAP.

Control Over Web and Cloud Usage

- ProxySG gives you control over your sensitive content. ProxySG enables you to identify cloud apps and reduce the risks posed by non-sanctioned, “shadow IT” - 80% of employees use software as a service (SaaS) applications for work without their employer’s knowledge. The Web Application Policy Engine provides granular visibility and control over all the web applications in use in your environment.

Accelerated Cloud App Performance

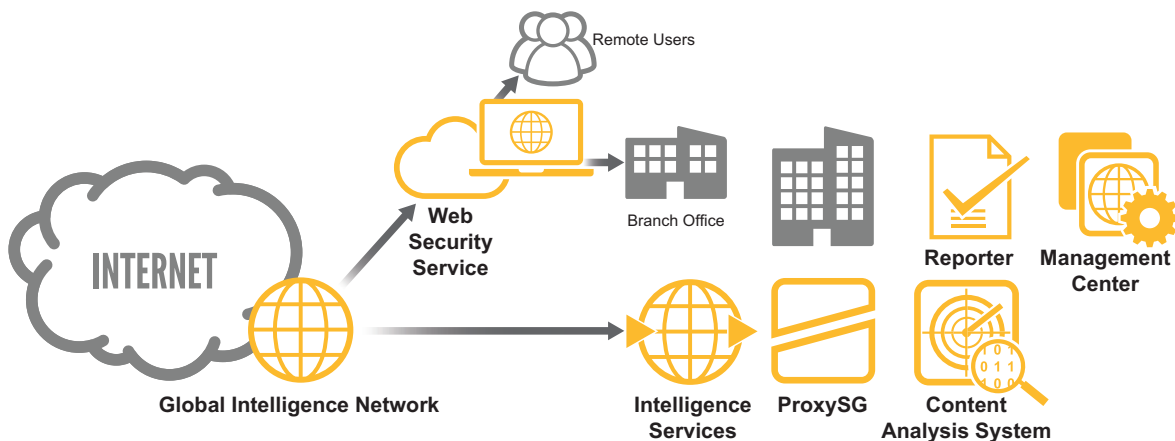
- The ProxySG provides content caching and traffic optimization to ensure your critical cloud apps are there when your users need them. It offers advanced bandwidth management, with streaming media splitting and method level controls, per protocol, to help you optimize the overall performance, efficiency and capacity of your bandwidth investments.

Hybrid Delivery Model

- Symantec’s industry-leading web protection is available as an appliance (ProxySG), virtual appliance (SWG VA), and cloud service (Web Security Service) – meeting the unique security needs of any organization whether on-premises, in the cloud, or hybrid deployment.

Unmatched Performance and Reliability

- The ProxySG provides up to 1Gbps throughput for high availability deployments. The hardware platforms and operating system (SGOS) were built for fast, efficient web object processing, running year after year at performance levels beyond the competition. Secure and small in design, the ProxySG rarely needs attention or patches. Health checks and monitoring provide administrator awareness, and Symantec Management Center enables centralized device, license and policy management.



Scalability and Lower TCO

- ProxySG delivers a lower TCO through performance innovations that require less hardware, rack space and power than alternative solutions. Available reporting scales for visibility of all secure web gateway and remote users, with custom dashboards and reports on a single server optimized for up to 20 billion log lines.

ProxySG	SG S200-10	SG S200-20	SG S200-30	SG S200-40	SG S400-20	SG S400-30	SG S400-40	SG 500-10	SG 500-20/30
LICENSE CAPACITY									
Recommended Employee Count	500	1200	2600	5000	6000	14,000	25,000	30,000	50,000
SYSTEM									
Disk Drives	500GB SATA	2 x 500GB SATA	2 x 500GB SATA	2 x 500GB SATA	3 x 1TB SAS ²	6 x 1TB SAS ²	8 x 1TB SAS ²	8 x 1TB SAS ²	16 x 1TB SAS ²
Boot Device	Single 16GB SSD				2 x 8GB SSD (dual redundant)				
RAM	6GB	8GB	8GB	16GB	16GB	24GB	32GB	64GB	128GB
Onboard Ports ¹	(2) 1000Base-T Copper ports (with bypass) (2) 1000Base-T Copper ports (non-bypass) (1) 10/100Base-T Copper, BMC Management Port							(2) 10Gb Base-T Copper ports (with bypass) (2) 10Gb Base-T Copper ports (non-bypass) (1) 1000Base-T Copper, System Management Port (1) 1000Base-T Copper, BMC Management Port	
Optional NICs	4x10/100/1000Base-T (Copper with bypass capability) 4x1GbE Fiber-SX (with bypass capability, full height slot only) 4x1GbE Fiber-LX (with bypass capability)				4x10/100/1000Base-T (Copper with bypass capability) 4x1GbE Fiber-SX (with bypass capability, full height slot only) 4x1GbE Fiber-LX (with bypass capability) 2x10Gb Base-T (Copper with bypass capability) 2x10Gb Base-T (Copper non-bypass) 2x10Gb Fiber (SR with bypass capability) 2x10Gb Fiber (LR with bypass capability)				
Available Slots	1 full height				1 full height / 1 half height			2 full height	2 full height 3 half height
Power Supplies	1	1	1	1	2	2	2	2	2

¹ BMC ports are currently disabled. Ports specified as 1000Base-T Copper ports are 10/100/1000Base-T capable, and ports specified as 10Gb Base-T Copper are also 1000Base-T capable.

² SAS drives are hot-swappable.

Physical Properties	SG S200	SG S400	SG S500
Dimensions and Weight			
Dimensions (L x W x H)	446.3mm x 440.0mm x 43.5mm (17.57in x 17.32in x 1.71in) (chassis only) 454.5mm x 482.6mm x 43.5mm (17.89in x 19.0in x 1.71in) (chassis with extensions) Note: 640mm L (25.81in L) with optional slide rails 1 RU height	572mm x 432.5mm x 42.9mm (22.5in x 17.03in x 1.69in) (chassis only) 643mm x 485.4mm x 42.9mm (25.3in x 19.11in x 1.69in) (chassis with extensions) 1 RU height	710mm x 433.3mm x 87.2mm (27.95in x 17.05in x 3.43in) (chassis only) 812.8mm x 433.4mm x 87.2mm (32in x 17.06in x 3.43in) (chassis with extensions) 2 RU height
Weight (max)	Approx. 7.4 kg (16.4 lbs) +/- 5%	Approx. 12.8 kg (28 lbs) +/- 5%	Approx. 30kg (66.12 lbs) +/- 5%
Operating Environment			
AC Power	100-127VAC @ 6A 200-240V @ 3A, 47-63Hz	Dual redundant and hot swappable power supplies 100-127VAC @ 8A, 200-240VAC @ 4A, 47-63Hz	Dual redundant and hot swappable power supplies 100VAC @ 12A, 240VAC @ 5A, 50-60Hz
Total Output Power	350 Watts	450 Watts	1100 Watts
Thermal Rating	Typical: 785 BTU/Hr, Max: 1195 BTU/Hr	Typical: 1086 BTU/Hr, Max: 1381 BTU/Hr	Typical: 2598.42 BTU/Hr, Max: 3751 BTU/Hr
Optional DC Power	Not available	Input voltage range: 40.5V - 57V Input Max Current: 22A Total Output Power: 770W	Input voltage range: 40 - 72 VDC Input Max Current: 30A Total Output Power: 1100W
Temperature	5°C to 40°C (41°F to 104°F) at sea level		
Humidity	20 to 80% relative humidity, non-condensing		
Altitude	Up to 3048m (10,000ft)		
For All ProxySG S200, S400 and S500 Series			
Regulations	Safety	Electromagnetic Compliance (EMC)	
International	CB – IEC60950-1, Second Edition	CISPR22, Class A; CISPR24	
USA	NRTL – UL60950-1, Second Edition	FCC part 15, Class A	
Canada	SCC – CSA-22.2, No.60950-1, Second Edition	ICES-003, Class A	
European Union (CE)	CE – EN60950-1, Second Edition	EN55022, Class A; EN55024; EN61000-3-2; EN61000-3-3	
Japan	---	VCCI V-3, Class A	
Mexico	NOM-019-SCFI by NRTL Declaration	---	
Argentina	S Mark – IEC 60950-1	---	
Taiwan	BSMI – CNS-14336-1	BSMI – CNS13438, Class A	
China	CCC – GB4943.1	CCC – GB9254; GB17625	
Australia/New Zealand	AS/NZS 60950-1, Second Edition	AS/ZNS-CISPR22	
Korea	---	KC – RRA, Class A	
Russia	TP TC 004/2011	TP TC 020/2011	
Environmental	RoHS-Directive 2011/65/EU, REACH-Regulation No 1907/2006		
Product Warranty	Limited, non-transferable hardware warranty for a period of one (1) year from date of shipment. BlueTouch Support contracts available for 24/7 software support with options for hardware support.		
Gov't Certifications	For further government certification information please contact Federal_Certifications@bluecoat.com		
More Info	Contact regulatoryinfo@bluecoat.com for specific regulatory compliance certification questions and support		

About Symantec

Symantec Corporation World Headquarters

350 Ellis Street Mountain View, CA 94043 USA | +1 (650) 527 8000 | 1 (800) 721 3934 | www.symantec.com

Symantec Corporation (NASDAQ: SYMC), the world's leading cyber security company, helps businesses, governments and people secure their most important data wherever it lives. Organizations across the world look to Symantec for strategic, integrated solutions to defend against sophisticated attacks across endpoints, cloud and infrastructure. Likewise, a global community of more than 50 million people and families rely on Symantec's Norton suite of products for protection at home and across all of their devices. Symantec operates one of the world's largest civilian cyber intelligence networks, allowing it to see and protect against the most advanced threats. For additional information, please visit www.symantec.com or connect with us on Facebook, Twitter, and LinkedIn.

Copyright © 2017 Symantec Corporation. All rights reserved. Symantec and the Symantec logo are trademarks or registered trademarks of Symantec Corporation or its affiliates in the United States and other countries. Other names may be trademarks of their respective owners.
SYMC_ds_ProxySG_S200_S400_S500_EN_v2c