

# Tenable Webinar

## 9. & 14. März 2023



### Risikobasiertes Exposure Management mit **TENABLE ONE**

Thomas Cueni, Senior Security Engineer



## AGENDA

- Was ist Exposure Management?
- Die Tenable One Exposure Management Platform
- Demo (Fokus: Angriffspfad-Analyse)



# Tenable Webinar

## 9. & 14. März 2023

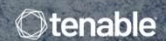
### THE MODERN ATTACK SURFACE

3 attributes make the modern attack surface more difficult than ever to defend:

- 1 **RAPIDLY GROWING**
- 2 **HIGHLY DYNAMIC**
- 3 **INCREASINGLY INTERCONNECTED**



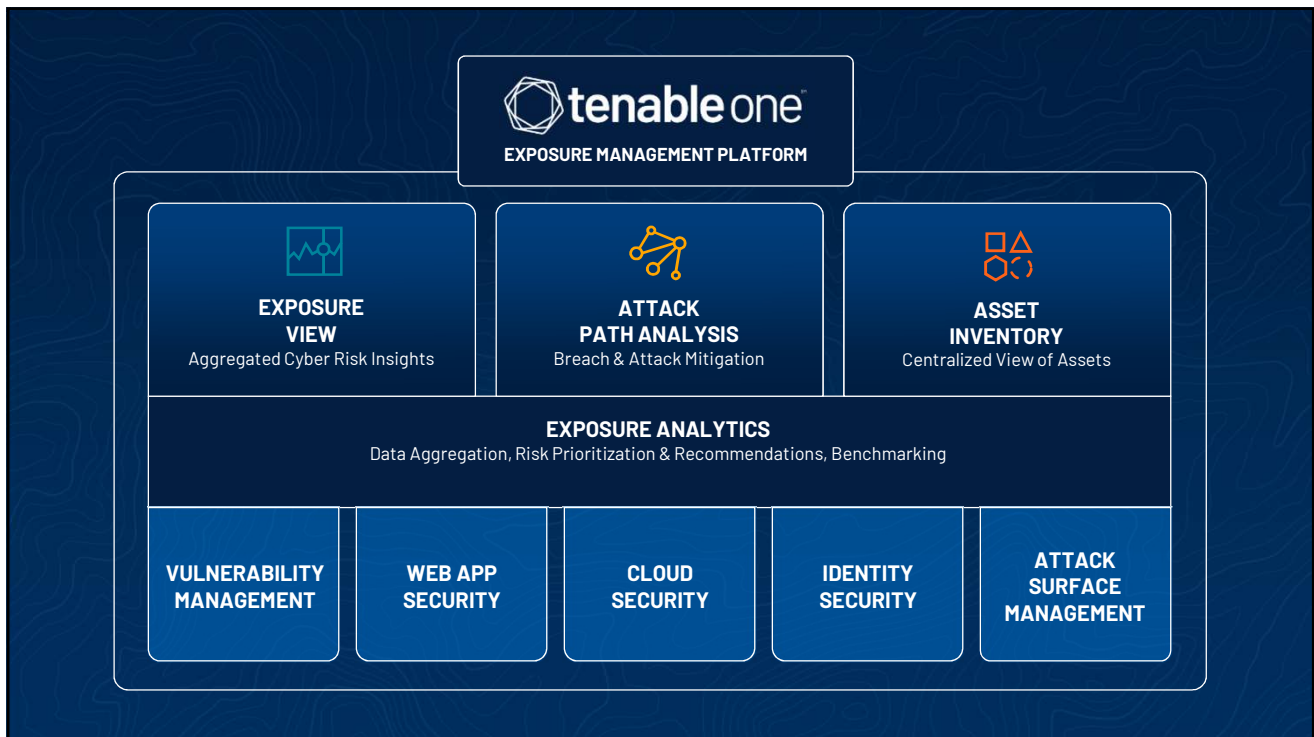
### SIGNIFICANT **BREACHES** TARGET THE WEAKEST LINK ACROSS THE ENTIRE ATTACK SURFACE



# Tenable Webinar

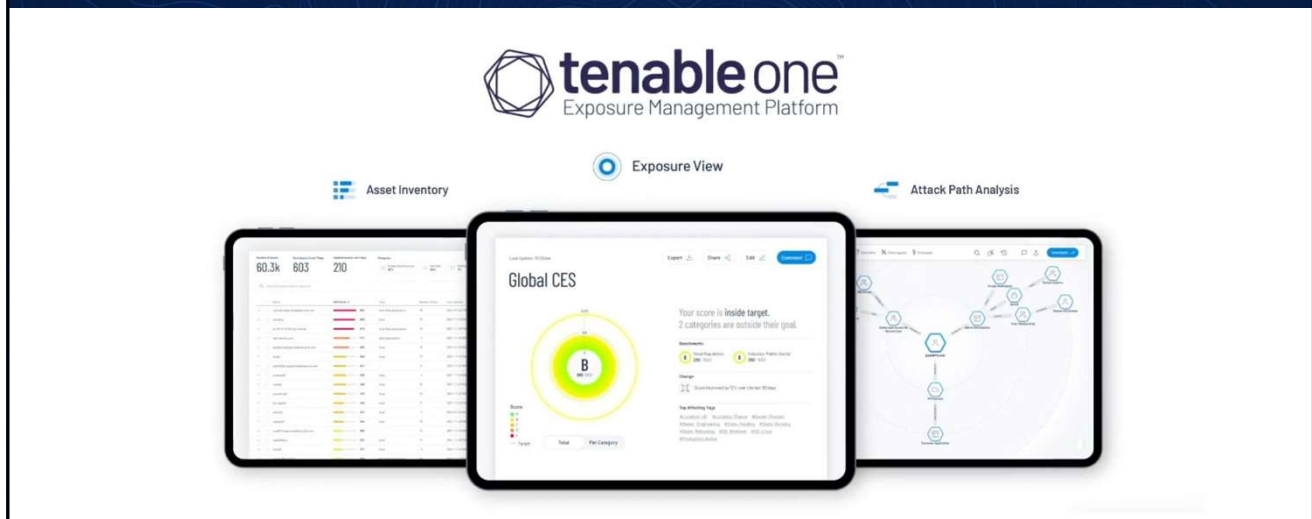
## 9. & 14. März 2023

### EVOLUTION: VULNERABILITY MANAGEMENT TO EXPOSURE MANAGEMENT



# Tenable Webinar 9. & 14. März 2023

**TENABLE ONE EXPOSURE MANAGEMENT PLATFORM:  
EFFECTIVE METRICS TO COMMUNICATE CYBER RISK**  
A centralized, business-aligned view of cyber risk with clear KPIs and benchmarks.



## ASSET INVENTORY

The screenshot shows the 'Asset Inventory' interface. On the left, there is an 'Analytics' sidebar with three main sections: 'Exposure View' (Unite the global cyber-exposure risk of your organization in a single pane of glass), 'Attack Path' (Embrace the attacker's perspective to manage critical attack techniques across your entire organization), and 'Asset Inventory' (Organize, manage, and review your organization's assets no matter the source). The main content area is titled 'Assets Inventory' and includes a summary of asset counts: 'Number of assets: 10.5k', 'New assets in last 7 days: 10.5k', and 'Updated assets in last 7 days: 10.5k'. Below this, there are filters for 'Risk Applications: 20%', 'Computing Resource: 55%', and 'Identifiers: 20%'. A search bar is present for 'Search for asset name or asset ID'. The main table lists assets with columns for 'Name', 'ACS Score', 'Type', 'Number of tags', 'Last updated', and 'Category'. An orange arrow points from the 'Asset Inventory' section in the sidebar to the table.

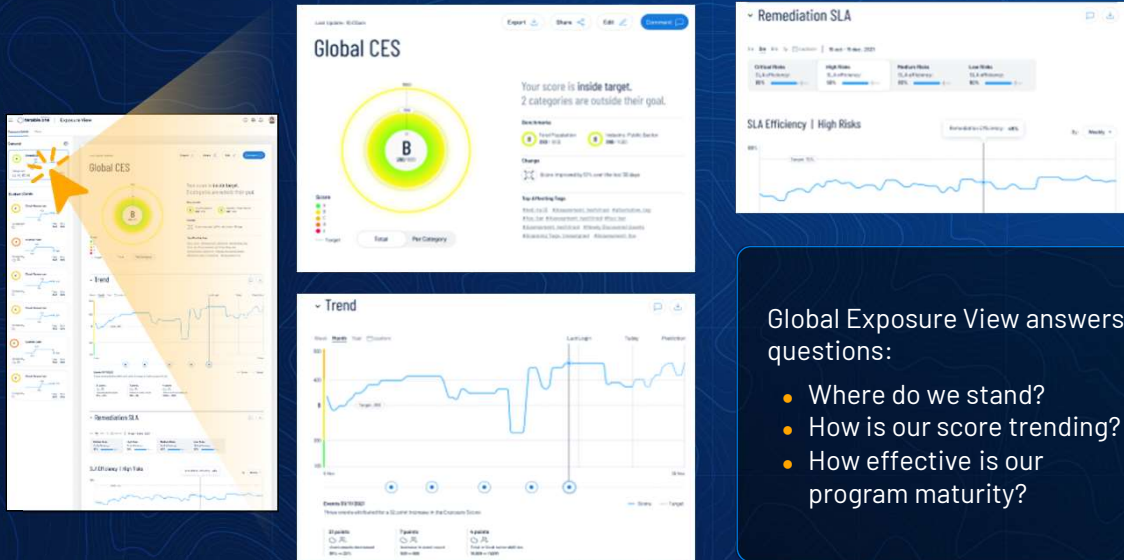
Name	ACS Score	Type	Number of tags	Last updated	Category
06A22J490	827	activedirectory	5	1/25/2022, 8:26:43 AM	
06030Q96	868	activedirectory	5	1/25/2022, 8:21:26 AM	
06130Q97	532	activedirectory	4	1/25/2022, 8:26:52 AM	
06L89Q97	587	activedirectory	2	1/25/2022, 8:21:07 AM	
06076K9X	376	activedirectory	3	1/25/2022, 8:26:52 AM	
06P17998	696	activedirectory	2	1/25/2022, 8:28:57 AM	

- Full visibility into all assets regardless of data source (VM, WAS, Active Directory, etc).
- View Asset details
- Create tags for custom Exposure Cards

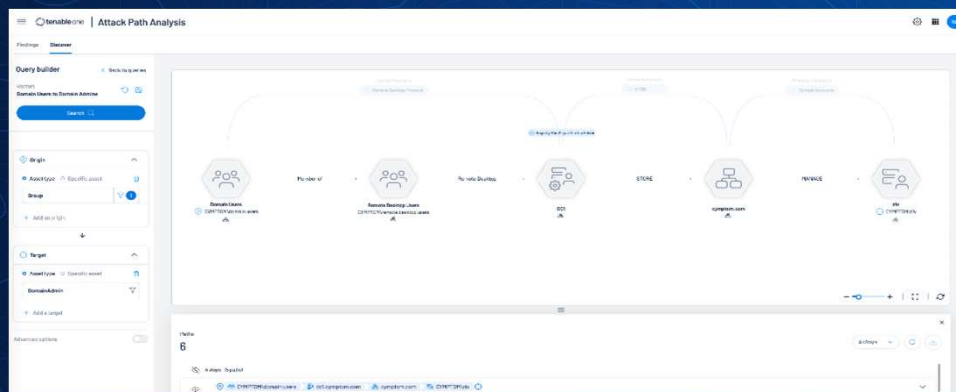
tenable

# Tenable Webinar 9. & 14. März 2023

## EXPOSURE VIEW: GLOBAL CYBER EXPOSURE SCORE



## ATTACK PATH ANALYSIS



- Protect your most critical assets
- Visualization and prioritization to mitigate common attack paths from externally identified points through to critical internal assets long before attackers seek them out.
- Visualize all viable attack paths continuously – both on-premises and in the cloud.

