

# Password Safe

**Automatically secure and manage sensitive accounts and credentials while protecting Paths to Privilege™**

Privileged credentials and secrets are the gateways to an organization's most valuable assets, unlocking access to critical accounts and processes across on-premises, hybrid, and cloud environments. With 74% of all breaches including the human element\*, automated management of privileged credentials is crucial.

BeyondTrust Password Safe combines complete discovery and onboarding of privileged accounts, real-time session monitoring and management, and detailed credential analytics and reporting, with flexible turnkey deployment on your preferred platform. It boasts a robust range of integrations that fit seamlessly into the workflows across your existing technologies, enabling you to reduce the attack surface in your stack without introducing complexity.

\*Source: Data Breach Investigations Report. Verizon. June 2023.

## Key Security Outcomes

### Protect Access Everywhere

Secure the entire organization by discovering, storing, and managing human and non-human identities across on-premises, cloud, and hybrid environments.

### Enable Rapid Audit Readiness

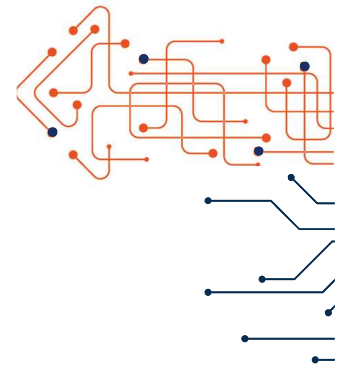
Benefit from real-time session management and monitoring, and advanced auditing and forensics capabilities.

### Streamline Governance and Productivity

Easily align with compliance regulations via a single solution for discovering, storing, rotating, and controlling access to privileged accounts and secrets.

### Support Zero Trust

Enable zero trust with discovery that eliminates blind spots, automated credential and secrets management, and adaptive access controls.



## Client Success Stories

### MYVEST

*"BeyondTrust enables us to rise to the occasion, meet regulatory standards of our customers and work towards true Zero Trust."*

- Mahmood Haq, CISO

### CITY OF MIDLOTHIAN

*"With Privileged Remote Access, Password Safe, and Remote Support, we've ensured privileges aren't left unchecked, preventing users from becoming entry points for attacks."*

-Mike Weiss, Information Technology Director

**To learn more or request a demo, visit [www.beyondtrust.com/products/password-safe](https://www.beyondtrust.com/products/password-safe) or contact our sales team at [sales@beyondtrust.com](mailto:sales@beyondtrust.com).**

Our experts will guide you through the setup process and help you get the most out of our solution.